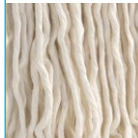




## Mop wide central band and tape

Cotton mop with 8 cm central band and tape



### Technical information

code	notes	cm	C	gr	pcs	kg	m <sup>3</sup>
00001300			<input type="checkbox"/>	350	50	18,6	0,094
00001301			<input type="checkbox"/>	400	50	21,1	0,094
00001302			<input type="checkbox"/>	450	50	23,6	0,115
00001303			<input type="checkbox"/>	500	50	26,1	0,115

### SYSTEM

Mop system with clamp to be used with flat or jaw wringer  
Ideal to clean residual dirt that requires recurring rinsing of the fibres

### GREEN BOX



Yarn 100% recycled cotton

### Advantages

- **Highly absorbent:** thanks to their higher weight, mops absorb a lot of cleaning solution providing wider floor coverage
- **Handy:** wide central band makes mop fixing to the clamp easier
- **Effective:** the tailband keeps fibres united granting a better dirt collection and cleaning result
- **Easy:** easy to use

### Compatibility

Compatible with jaw and flat wringers



## Material

Yarn: cotton - Support: cotton

## Washing conditions

### Guidelines for proper fibre maintenance

Follow the washing instructions (temperatures and dosage) on the detergent packaging  
Perform a pre-wash in cold water to remove any residual product used during cleaning operations  
Do not use fabric softener  
It is recommended to use the convenient laundry nets in washing machine in order to preserve the fibres  
Recommended use of normal textile detergent  
Do not use detergents with Ph > 11

## Specific mop instructions



Washing temperature max 60° C



Bleaching only with oxygen, do not use chlorine or bleach



Do not tumble dry or in a dryer

## Related products



Mop clamp

## Product options



Mop wide central band



Mop narrow central band and tape